

CS **WEAR** Resistant Material Co Limited

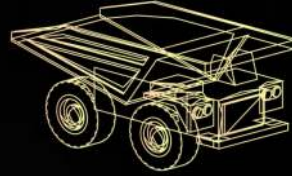
Professional wear solutions supplier, focus on reducing down time for more than 20 years



AGGREGATE



MINING



CONSTRUCTION



CEMENT



LAMINATED WEAR BLOCKS



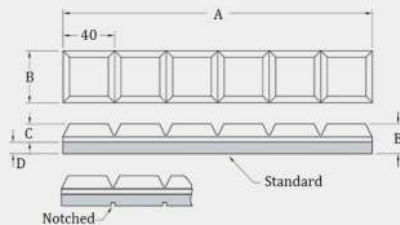
Laminated wear block is an exceptional laminated product that is resistant to impact and abrasion while retaining ductile characteristics by bonding High-Chromium white iron onto a mild steel backing plate. The bonding process is what we call "Copper Brazing", bonding strength is over 300Mpa and will not separate. The High-Chromium white iron has an extremely high hardness of brinell 700HB (63HRC) and mild steel backing plate can absorb high impacts, makes them weldable and easy to install with no pre or post heating when welding.



Typical products including chocky bar, wear button, wafer strips, wear plate, shredder hammer tips and much more other wear blocks, over 2,000 standard shapes and other customized sizes also available upon request.

Chocky bars

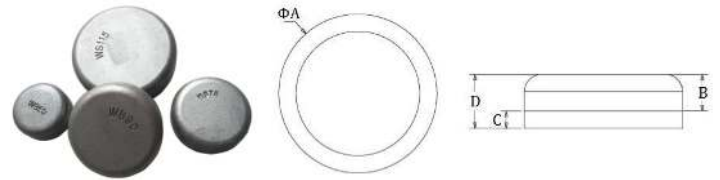
Chocky bar is one of the typical materials of Laminated wear blocks, which is a combination of high chrome white iron metallurgically bonded to a mild steel backing plate. The "V-groove" design allows chocky bars to be bent around a radius or separated to changed length requirement needed.



Part No.	Size(mm)	A	B	C	D	E	Weight(kg)
CB 25	240 x 25 x 23	240	25	15	8	23	0.9
CB 40	240 x 40 x 23	240	40	15	8	23	1.5
CB 50	240 x 50 x 23	240	50	15	8	23	1.9
CB 65	240 x 65 x 23	240	65	15	8	23	2.5
CB 80	240 x 80 x 23	240	80	15	8	23	3.2
CB 90	240 x 90 x 23	240	90	15	8	23	3.5
CB 100	240 x 100 x 23	240	100	15	8	23	3.9
CB 130	240 x 130 x 23	240	130	15	8	23	5.3
CB 150	240 x 150 x 23	240	150	15	8	23	6.0

Wear buttons

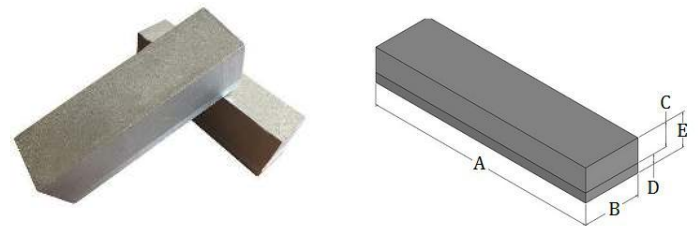
Wear Buttons & Donuts are the perfect material for wear protection of smaller areas, easy to install with no pre or post heating required, requires less welding time and material. The Donuts also offers flexible options with internal and external welding, Variability in size. Available in diameters from 60mm to 150mm.



Part No.	Size(mm)	Diameter (A)	Wear (B)	Backing (C)	Thickness (D)	Weight (kg)
WB60	Φ60 x 27	60	17	10	27	0.7
WB75	Φ75 x 27	75	17	10	27	0.9
WB90	Φ90 x 27	90	17	10	27	1.4
WB110	Φ110 x 32	110	20	12	32	2.1
WB115	Φ115 x 32	115	20	12	32	2.5
WB150	Φ150 x 41	150	25	16	41	5.7

Wear bars

Wear Bars are the utility item of the CSW wear product line. Common applications are protection of inner & external wall of heavy earth moving buckets, chute & lip protection, build up points in impact zones etc.



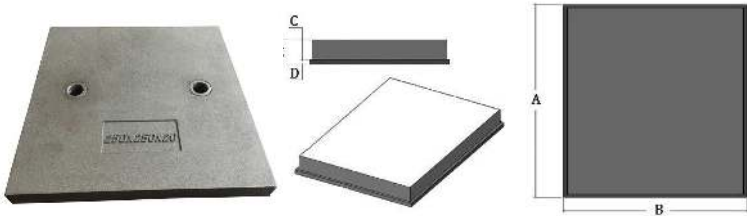
Part No.	Size(mm)	Length(A)	Width(B)	Wear(C)	Backing (D)	Thickness (E)	Weight (kg)
CSW919	200 x 25 x 25	200	25	15	10	25	1.0
CSW1191	300 x 25 x 25	300	25	15	10	25	1.5
CSW295	153 x 38 x 33	153	38	25	8	33	1.5
CSW4	300 x 38 x 33	300	38	25	8	33	3.0
CSW184	150 x 75 x 39	150	75	29	10	39	3.4
CSW337	127 x 50 x 50	127	50	38	12	50	2.4
CSW369	210 x 50 x 50	210	50	38	12	50	4.1
CSW125	230 x 50 x 50	230	50	38	12	50	4.5
CSW201A	432 x 50 x 50	432	50	38	12	50	8.5
CSW1101	150 x 50 x 50	150	50	40	10	50	2.9
CSW343	190 x 50 x 50	190	50	40	10	50	3.7
CSW453	294 x 50 x 50	294	50	40	10	50	5.8
CSW2017	300 x 50 x 50	300	50	40	10	50	5.9
CSW2075	200 x 75 x 75	200	75	63	12	75	8.9
CSW619	150 x 75 x 60	150	75	50	10	60	5.3
CSW3015	300 x 150 x 60	300	150	48	12	60	21.1
CSW4538	450 x 38 x 31	450	38	25	6	31	4.2
CSW508	190 x 50 x 30	190	50	20	10	30	2.2
CSW2199	65 x 50 x 50	65	50	38	12	50	1.3
CSW2265	115 x 50 x 50	115	50	38	12	50	2.3
CSW2230	600 x 50 x 50	600	50	38	12	50	11.8
CSW528	150 x 75 x 50	150	75	40	10	50	4.4

LAMINATED WEAR BLOCKS



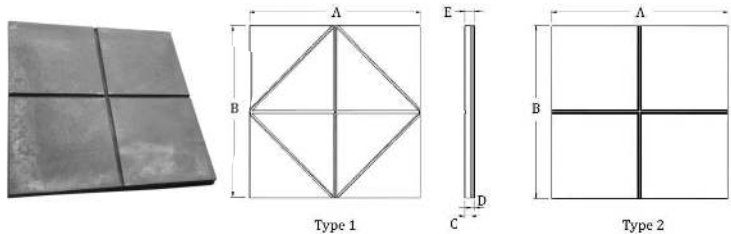
Wear plates

Laminated wear plate is also a combination of Chrome white iron wear casting vacuum brazed onto mild steel base, with Hardness of 63HRC/700BHN, the wear surface is smooth and flat, wear life normally 1.5-2 times of clad plate and 6-8 times of AR 400 steel plate, Suitable for applications such as: chutes, hoppers, bins, liners, impact walls, rock boxes etc, very easy to use, no pre or post heating when welding, weld-on or bolt-on studs or bolt holes can be easily added upon customer's requests



Part No.	Size(mm)	Length(A)	Width(B)	Wear(C)	Backing (D)	Thickness (E)	Weight (kg)
WP 2020-18	200 x 200 x 18	200	200	12	6	18	5.7
WP 2020-20	200 x 200 x 20	200	200	14	6	20	6.3
WP 2525	250 x 250 x 20	250	250	14	6	20	9.8
WP 249-A	294 x 144 x 30	294	144	20	10	30	10.2
WP 249-B	294 x 294 x 30	294	294	20	10	30	20.4
WP 3015-20	300 x 150 x 20	300	150	14	6	20	7.0
WP 3015-25	300 x 150 x 25	300	150	19	6	25	8.8
WP 3015-30	300 x 150 x 30	300	150	20	10	30	10.6
WP 3030-18	300 x 300 x 18	300	300	12	6	18	12.7
WP 3030-20	300 x 300 x 20	300	300	14	6	20	14.1
WP 3030-25	300 x 300 x 25	300	300	19	6	25	17.7
WP 301	301 x 200 x 28	301	200	18	10	28	13.2
WP 305	305 x 150 x 24	305	150	18	6	24	8.6
WP 445	445 x 445 x 25	445	445	19	6	25	38.9

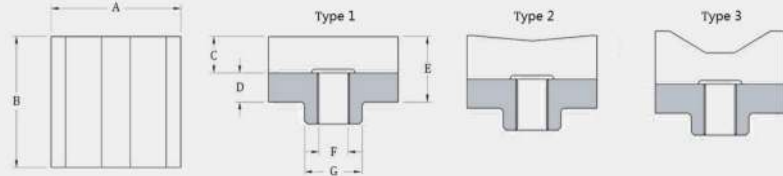
Notched wear plates



Part No.	Type	Length(A)	Width(B)	Wear(C)	Backing (D)	Thickness (E)	Weight (kg)
CSW2180	1	400	400	15	8	23	28.7
CSW2747	2	200	200	6	6	12	3.8
CSW2748	2	300	300	6	6	12	8.5

Sugar mill shredder hammer tips

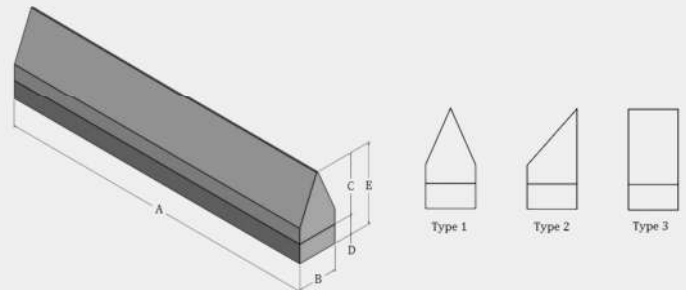
CSW shredder hammer tips are designed specially for the sugar industry, which is the most cost effective alternative to expensive, labour intensive hard-facing methods. Machined steel base allows for quick & easy installation through bolt on or weld on. Tips can be rotated for maximum wear life, no need to rebuild edges.



Part No.	Type	A	B	C	D	E	F	G	Weight
PLAIN									
CSW653	1	90	90	25	20	45	7/8"-14 UNF	40	2.9
CSW920	1	90	50	25	20	45	7/8"-14 UNF	40	1.6
CSW996	1	50	50	20	18	38	3/4"-16 UNF	32	0.7
CSW1052	1	80	80	25	20	45	7/8"-14 UNF	40	2.4
CSW1115	1	100	100	25	20	45	7/8"-14 UNF	40	3.6
CSW120B	1	64	64	20	20	40	3/4"-16 UNF	31.3	1.2
CSW1340	1	80	56	25	20	45	M20 X 1.5P	35	1.6
FLARED									
CSW1654	2	90	90	30	20	50	7/8"-14 UNF	40	3.0
CSW203B	2	80	56	30	20	50	M20 X 1.5P	35	1.8
BUTTERFLY									
CSW1927	3	90	90	35	20	55	7/8"-14 UNF	40	3.1
CSW2014	3	90	50	35	20	55	7/8"-14 UNF	40	1.8
CSW2039	3	90	56	35	20	55	M20 X 1.5P	35	1.9

Sugar mill knife edges

CSW 700BHN Knife Edges are much more superior when compared with Q&T knife edges and Hard-facing edges, with superior edge retention & sharpness, which offering greater wear life. Easy to install, maintain & replace, hence increased production & cutting efficiency



Part No.	Type	Length(A)	Width(B)	Wear(C)	Backing (D)	Thickness (E)	Weight (kg)
ARROWHEAD							
CSW1065-16	1	203	16	38	12	50	0.9
CSW1065-19	1	203	19	38	12	50	1.1
CSW1065-22	1	203	22	38	12	50	1.3
CSW1065-25	1	203	25	38	12	50	1.5
CSW1265-16	1	305	16	38	12	50	1.4
CSW1265-19	1	305	19	38	12	50	1.6
CSW1265-22	1	305	22	38	12	50	1.9
CSW1265-25	1	305	25	38	12	50	2.2
HALF ARROWHEAD							
CSW1065A-16	2	203	16	38	12	50	1.0
CSW1065A-25	2	203	25	50	12	62	1.7
CSW1265A-25	2	305	25	40	16	56	2.5
BLUNT							
CSW1301-19	3	203	19	38	12	50	1.6
CSW1301-25	3	203	25	38	12	50	2.1
CSW1301-28	3	203	28	38	12	50	2.3

The sizes and shapes of 700BHN laminated wear blocks including but not limited to above nominated sizes, other size can be customized upon customers requests.

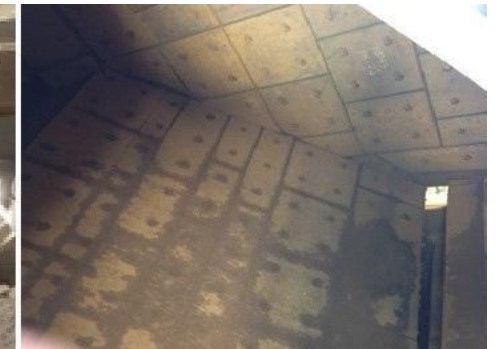
LAMINATED WEAR BLOCKS

APPLICATION PHOTOS

Bucket wear protection



Wear linings



Crusher wear protection



Sugar mill wear consumables

